



**AI
Researchers**
Embedding Responsible AI in Research



GET TO KNOW THE FUTURE OF ACADEMIC RESEARCH

www.airesearchers.eu



Co-funded by
the European Union

Co-funded by the European Union. Views and opinions expressed are however those of the author or authors only and do not necessarily reflect those of the European Union or the Foundation for the Development of the Education System. Neither the European Union nor the entity providing the grant can be held responsible for them.

About the Programme

AI Researchers is a three-year Erasmus+ Higher Education project.

It aims to **embed AI literacy** in European higher education by equipping early-career researchers and academic supervisors with structured AI training. The project encourages responsible AI adoption in research, aligning with EU ethical guidelines and research frameworks. It integrates AI literacy into research supervision and doctoral training to ensure sustainable, long-term impact.

Who Benefits?

We engage a **diverse range** of participants to ensure the broad uptake and sustainability of AI literacy training in Higher education research.

Early Career Researchers

Master's students and PhD candidates are involved in participant forums to ensure that AI literacy training aligns with the needs of early-career researchers.

Academic Supervisors

60+ academic supervisors from partner universities participate in the Train-the-Trainer workshops, gaining AI literacy skills to integrate into their research and mentoring practices.

Higher Education Leaders & Policymakers

Higher education leaders, including rectors, deans, and department heads, engage in discussions on embedding AI literacy within institutional research training strategies.

Vocational Education Training and Youth Education Stakeholders

VET and youth education stakeholders explore how AI literacy training can inform professional training and digital learning environments.



Main Results

AI Researchers is developing practical resources to support responsible, confident use of AI in research and supervision.

It includes:

- A Certified Online Course
- A Train-the-Trainer Programme
- AI literacy Toolkits
- Institutional accreditation pathways

These activities are complemented by research on AI adoption barriers, curriculum development, interactive workshops, peer learning circles, pilot testing, and policy engagement.

The project also produces an **AI Mentor Training Manual**, **institutional AI integration strategies**, and **policy recommendations**, all aimed at strengthening research training, promoting ethical AI use, and ensuring AI literacy remains a core competence across European HEIs.



Activities

Understanding & Overcoming Barriers to AI in Research

Identifies and addresses the barriers preventing academic supervisors from engaging with AI in research, ensuring they see AI as a credible and valuable tool rather than a threat.

Train-the-Trainer Programme

This equips academic supervisors with AI literacy, ensuring they can integrate AI into their own research and effectively mentor early-career researchers.

AI Researcher Course

Focuses on providing early career researchers with the skills, confidence, and structured guidance to integrate AI into their research ethically and effectively. By providing a certified, flexible, and interactive online course, AI literacy becomes an accessible and transferable competence across European HEIs.

Share & Sustain

Creates long-term impact of AI literacy in research by embedding sustainable, structured AI training within HEIs and expanding outreach to the broader research community. By concentrating first on internal adoption within partner institutions, followed by strategic external dissemination, it ensures that AI literacy remains an integral part of research training beyond the project's duration.



How these resources fit together

01

Under the Issues:

Start with the **AI Adoption Barriers Report** to see what supervisors and higher education leaders identify as key barriers, concerns and enabling conditions.

02

Choose practical steps that fit your context

Use the **AI Engagement Framework** to identify realistic actions you can implement in your department, research group or researcher development setting.

03

Put it into practice

Use the **AI Readiness Toolkit** to run discussions, trial low-burden changes and support supervisors and researchers with scenarios, prompts and facilitation guides.

04

Build capability over time

Use the **AI Mentor Training Manual** to support those who train supervisors and research staff, and the **Certified Online Course** for structured learning with early career researchers.

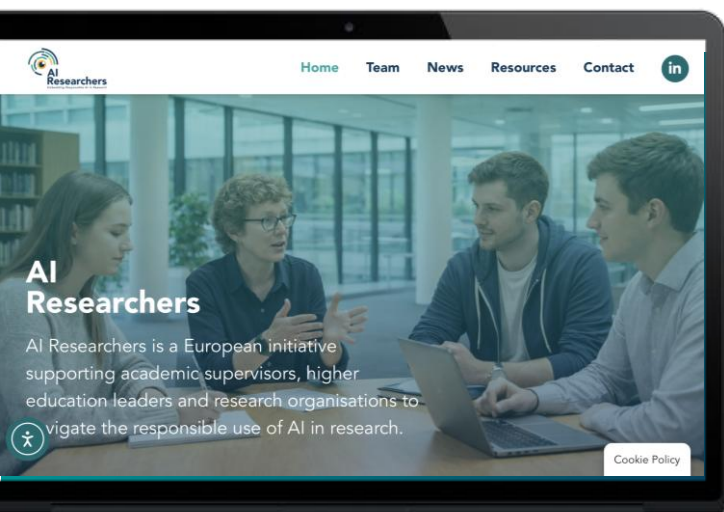
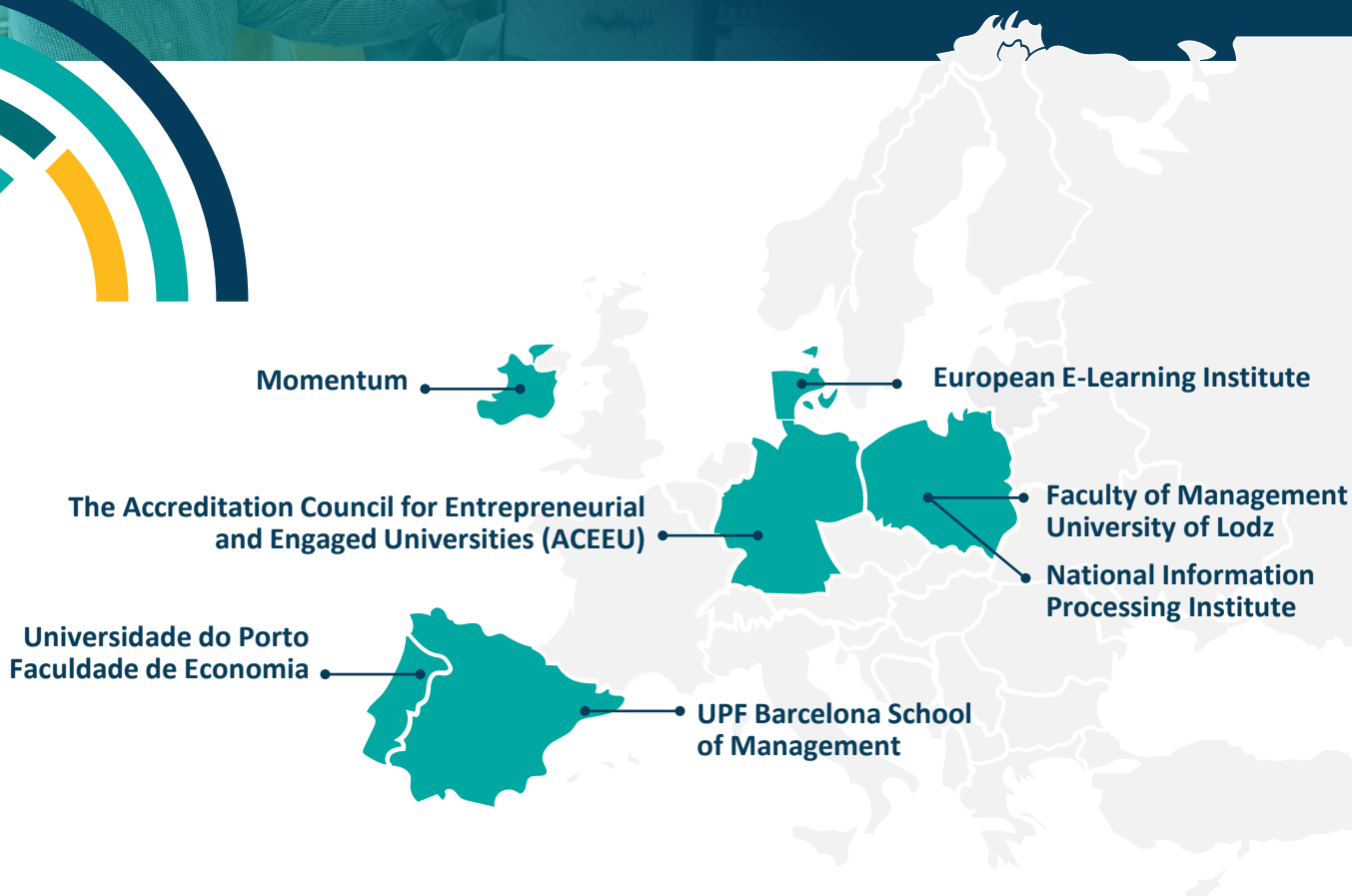


AI Researchers
Embedding Responsible AI in Research



We welcome engagement...

... from academic supervisors, higher education leaders, research support staff and early career researchers. If you would like to take part in project activities or share your perspective on AI in research and supervision, please contact us.



Contact Us

Dr T. Bartosz Kalinowski

Associate Professor and Head of the Department of Logistics at the Faculty of Management, University of Lodz

Contact - AI Researchers

Follow Our Journey



www.airesearchers.eu



momentum



Co-funded by the European Union

Co-funded by the European Union. Views and opinions expressed are however those of the author or authors only and do not necessarily reflect those of the European Union or the Foundation for the Development of the Education System. Neither the European Union nor the entity providing the grant can be held responsible for them.

